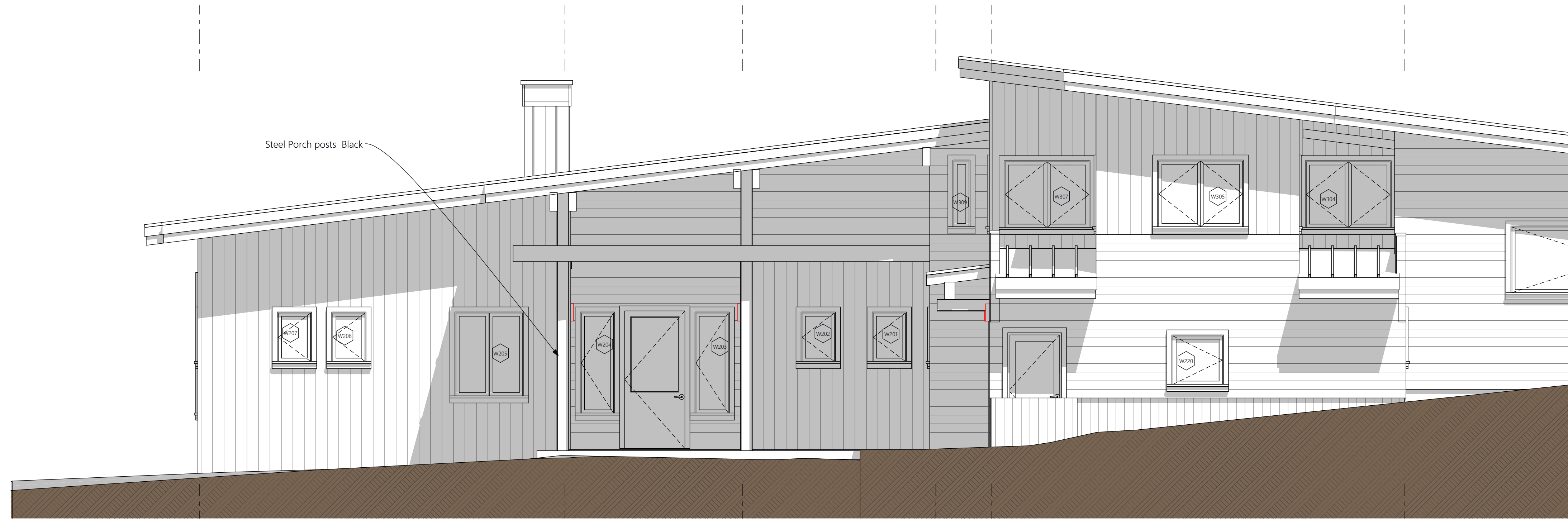
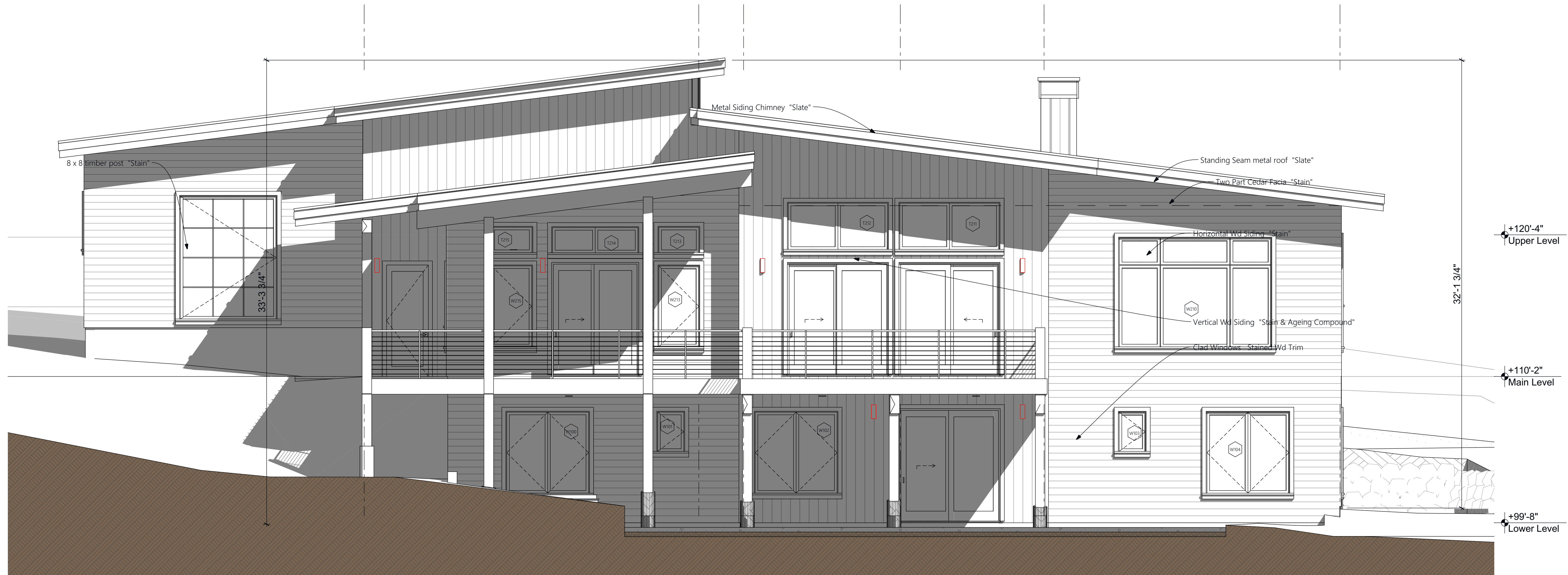


Point A 33'-6"  
 Point B 32'-4"  
 Point C 23'-6"  
 Point D 20'-4"

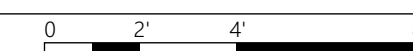
Average 27.42'



1 North Elevation  
 A201 SCALE: 1/4" = 1'-0"



2 South Elevation  
 A201 SCALE: 1/4" = 1'-0"



Vine Hill Partners

xx Swift Bear Swift Bear  
 Big Sky, Montana 59716

Project Number: Project Number

Drawings and Specifications as instruments of service are and shall remain the property of the Architect. They are not to be used on extensions of the project, or other projects, except by agreement in writing and appropriate compensation to the Architect.

The General Contractor is responsible for confirming and correlating dimensions at the job site. The Architect will not be responsible for construction means, methods, techniques, sequences, or procedures, or for safety precautions and programs in connection with the project.

© Company Name

ISSUED:

PRICING SET 5-7-21

Build 12-17-21

North & South Elevations

A201

Vine Hill Partners

xx Swift Bear Swift Bear Big Sky, Montana 59716

Project Number: Project Number

Drawings and Specifications as instruments of service are and shall remain the property of the Architect. They are not to be used on extensions of the project, or other projects, except by agreement in writing and appropriate compensation to the Architect.

The General Contractor is responsible for confirming and correlating dimensions at the job site. The Architect will not be responsible for construction means, methods, techniques, sequences, or procedures, or for safety precautions and programs in connection with the project.

© Company Name



1 East Elevation  
A202 SCALE: 1/4" = 1'-0"



2 West Elevation  
A202 SCALE: 1/4" = 1'-0"

ISSUED:  
PRICING SET 5-7-21  
Build 12-17-21

East & West Elevations

A202