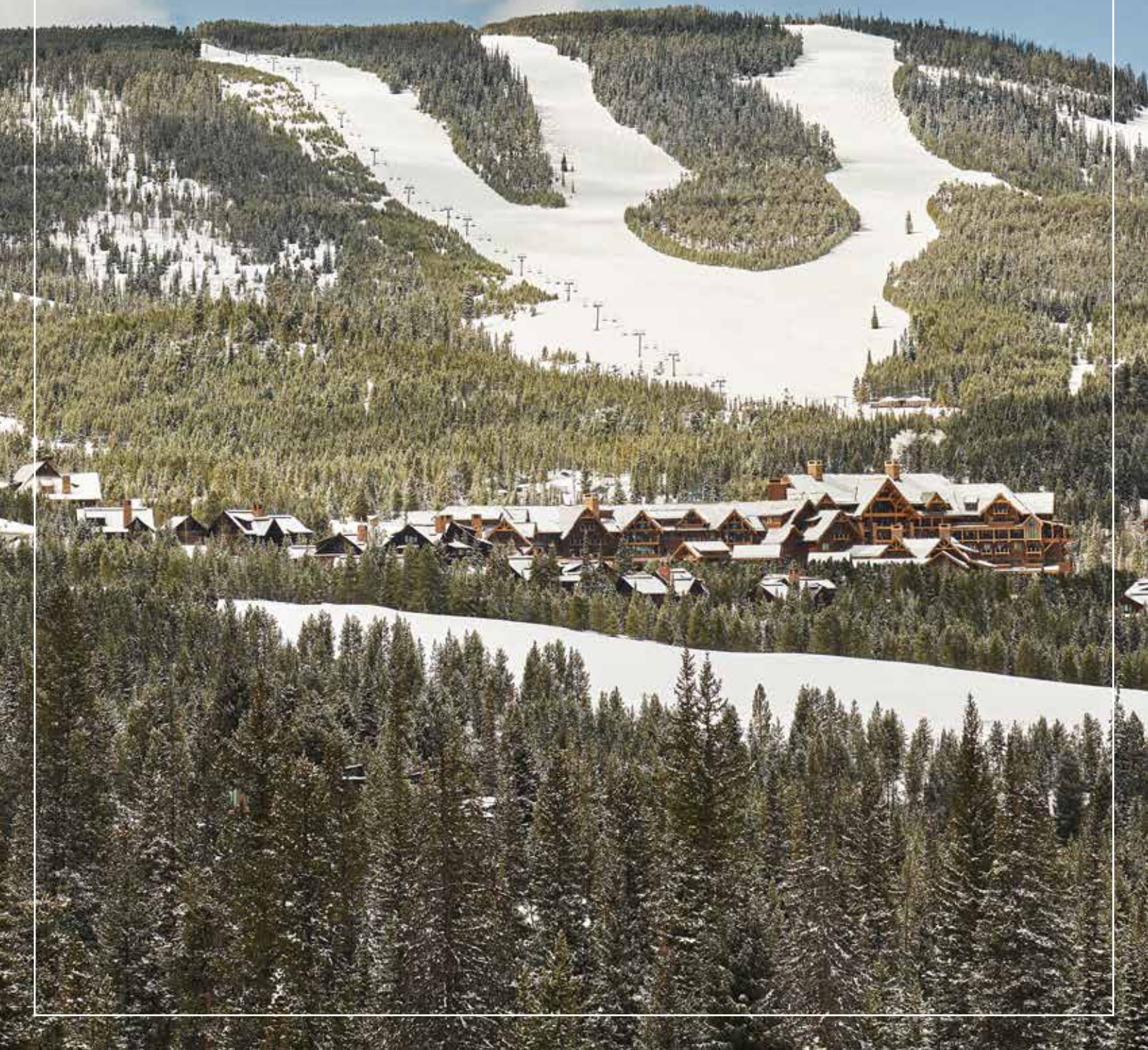




YELLOWSTONE CLUB®

MONTAGE RESIDENCES BIG SKY



INTRODUCING
Montage Residences Big Sky



MOUNTAIN-MODERN DESIGN.
AN ASTONISHING NATURAL SETTING.

Montage Hotels & Resorts proudly unveils Montage Big Sky. Consisting of 150 guest rooms and suites and a limited collection of 39 Montage Residences, it reflects Mountain-Modern design with aesthetics inspired by its extraordinary Rocky Mountain setting and a timeless palette of materials including regional woods and stone. Straddling two counties in southwestern Montana, Big Sky is its own wildlife reserve, with elk, moose and bears living among the locals. The community also lies within minutes of Gallatin Canyon and the famed Gallatin River, a blue ribbon trout stream, and a destination for fly fishermen from around the world, white water rafters and kayakers, and an hour from the famed gushing geysers and waterfalls of Yellowstone National Park – America's first and perhaps greatest national park.



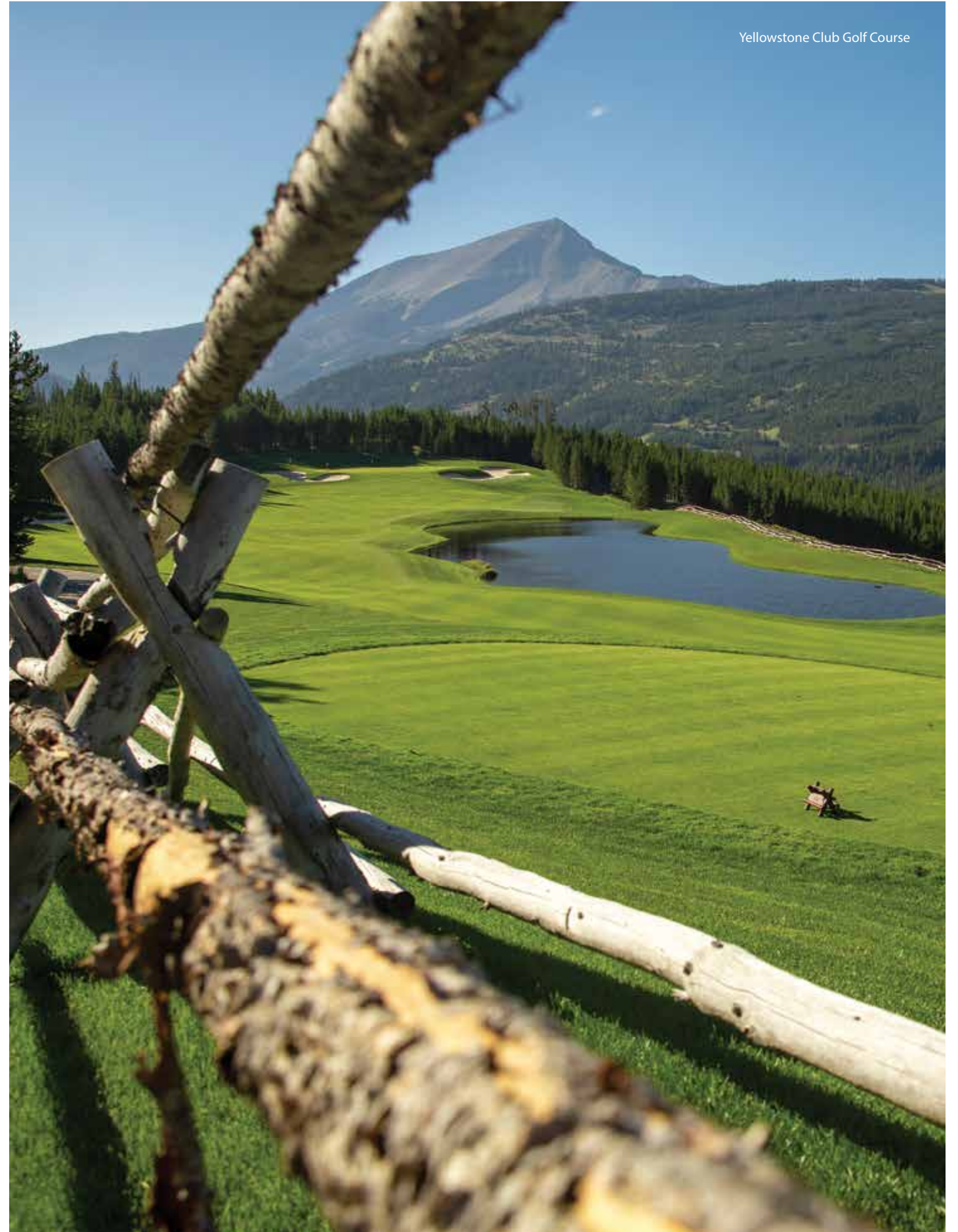


Montage, Living Room



A YEAR-ROUND MOUNTAIN OASIS THAT CELEBRATES THE AMERICAN WEST.

For those who share a love for big vistas and soaring mountains, authentic communities and a breathtaking natural environment, Montage Big Sky awaits. Here the air is fresh, the pace of life slower and the big blue skies dominate all. Montage Big Sky is a year-round haven of mountain adventures, all-consuming relaxation and a lifestyle that celebrates the incomparable American West. Montage offers exclusive ownership opportunities that encapsulate the renowned style, service and amenities of this iconic hospitality brand. With a central location within the Spanish Peaks Mountain Club community, Montage Big Sky offers ski-in/ski-out access to Big Sky Resort's 5,800 skiable acres, which are draped in 400 inches of fresh powder each year.





A HOME WITH A VIEW — A VASTNESS BEYOND COMPREHENSION.

When looking for a home in a mountain resort town, one of the most coveted attributes is a stunning view of the surrounding mountains. And no place has more incredible vistas than Big Sky. From the striking facade of 11,166-foot Lone Peak Mountain to the rugged outline of the Spanish Peaks and the surrounding 3 million acres of national forest, everywhere you look there is something awe-inspiring. Residence owners have access Yellowstone Club and the 15,200 acres it has to offer with activities for all seasons. With sweeping views across Montana, people come here inspired by the landscape; they fall in love with the mountains, the rivers and the meadows.

Montage Big Sky, Lobby



MONTAGE RESIDENCES AVAILABLE INVENTORY

ALL THE CONVENIENCES OF HOME,
CASUAL AND COMFORTABLE.

The 39 Residences at Montage Big Sky range from 2-bedrooms to 6-bedrooms (some two levels) and from 2,300 to 8,100 interior square feet. Each Residence offers Montage's striking contemporary design with features and aesthetics inspired by the local setting. The Residences come complete with designer finishes and lighting, fireplaces in the living room and master bedroom, and well-appointed open concept kitchens including custom cabinets, stone detail and appliances.

Montage Big Sky, Lone Peak



RESIDENCE #1

Located at Montage Big Sky

6 Bedrooms | 8 Bathrooms | 6,576 Sq. Ft.

Two Levels



Upper Level Deck View



Kitchen



Open Floor Plan



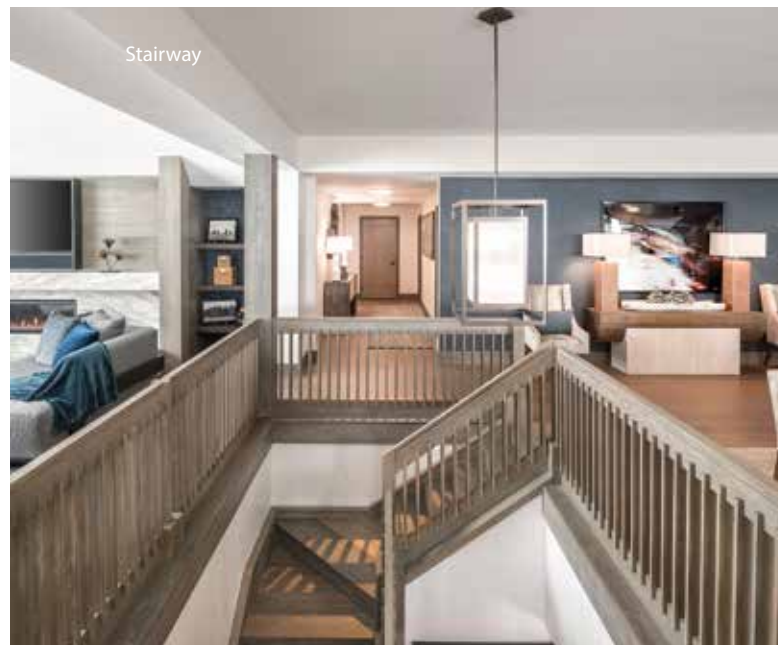
Master Suite



Rec Room



Living Room



Stairway



Ski Locker Room

RESIDENCE #7

Located at Montage Big Sky

3 Bedrooms | 4 Bathrooms | 3,475 Sq. Ft.

Two Levels



Kitchen



Master Bedroom



Open Floor Plan



Guest Bedroom #1



Master Bathroom



Deck View



Living Room



Guest Bathroom #2



Guest Bedroom #2

RESIDENCE #21

Located at Montage Big Sky

6 Bedrooms | 7 Bathrooms | 8,145 Sq. Ft.

One Level



RESIDENCE #29

Located at Montage Big Sky

2 Bedrooms | 3 Bathrooms | 2,315 Sq. Ft.

One Level



Open Floor Plan



Bedroom #1 Lock-off



Dining



Deck



Bedroom #2



Kitchen



Living Room



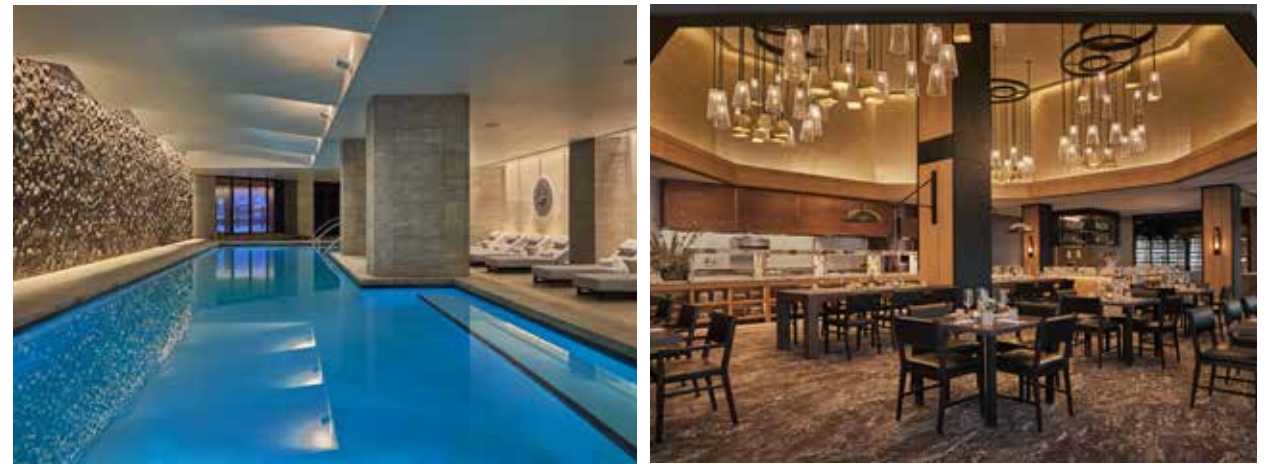
Bathroom #2



ADVENTURERS DISCOVER AN INCREDIBLE ARRAY OF ACTIVITIES.

In addition to offering world-class alpine skiing, Nordic skiing and snowshoeing, Big Sky is a storied place of fly-fishing and backcountry hiking, mountain biking and white water rafting in what is unquestionably an unspoiled, natural paradise. Montage Big Sky also offers access to Spanish Peaks Mountain Club's 18-hole Tom Weiskopf-designed championship golf course, located just steps from the resort. And after a day-long horseback ride, it is comforting to sit down with a cold beverage and a fine dinner at one of the outstanding restaurants of Montage Big Sky ... and, then, perhaps a visit to the shops or a downtown event at Big Sky's Town Center.

Cortina Restaurant



Montage Big Sky, Spa

A CONVENIENT LOCATION.

Montage Big Sky is located approximately one hour from the west entrance to Yellowstone National Park and just over an hour south of Bozeman Yellowstone International Airport. Easily accessible on U.S. 191, Bozeman airport offers 16 direct flights to cities such as San Francisco, Salt Lake City, Newark, Chicago, Dallas, Houston, Denver, Minneapolis, Atlanta, Portland and Seattle.

EFFORTLESS LIVING BEFITTING A PREMIER ADDRESS.

Each Montage Residence enjoys full access to all the amenities and services of Montage Big Sky, including five dining establishments, the signature Spa Montage, a lobby bar and lounge, a fitness center and indoor lap pool, outdoor family pool and hot tubs, a recreation room with four bowling lanes, Montage's immersive Paintbox children's program, retail shops and skier services, and underground parking. In addition, Montage Big Sky's dedicated staff ensures every request and detail is met. Owners will also have the option to participate in the Montage Rental Program.

ADDITIONAL FEATURES INCLUDE:

- 24-hour bell service, concierge, security, maintenance and housekeeping
- A full suite of à-la-carte services ranging from gift wrapping to transportation needs, excursions and home services
- Personalized pre-arrival provisioning
- Property and asset management services
- Priority and owner discounts at Spa Montage, dining and retail establishments
- One dedicated underground parking space
- Owner storage area
- Ski locker in the residential locker room





YELLOWSTONE CLUB®

For more information about this property and its pricing please contact YC Realty.
(888) 700-7748 | (406) 995-4900 | ycesales@yellowstoneclub.com | P.O. Box 161097 | Big Sky, Montana 59716
www.yellowstoneclub.com

All information deemed reliable, but not guaranteed. All acreages and square footages are estimates. The purchase of a home or homesite does not include membership in Yellowstone Club, or any right to use the private club facilities. Ownership of a home/homesite includes an obligation to pay assessments to a property owner's association. Please ask a sales associate for details. Photographs are representational of the approximate view corridors from the home. Livable square footages listed in this marketing piece are based upon the calculation of only the heated and livable areas within the exterior walls of the property and said square footages are deemed reliable, but not guaranteed. All acreages and square footages are estimates and are provided by the Seller or his designated representative; these measurements should not be a substitute for one's own evaluation and investigation. Ski accessibility is a relative term and can have different implications and meanings depending on the individual. One should investigate fully the property as it relates to its potential ski access and determine for themselves the degree of ski access the property might have or be developed. Buyer acknowledges and agrees that neither the Seller, the Broker, the Sales Associate nor any other real estate representative of the Yellowstone Club or its related affiliates have made any warranties or representations upon which Buyer has relied concerning the ski-in ski-out accessibility of the property. The determination of the level of ski access that a property might have will be the Buyers sole determination. 5/23