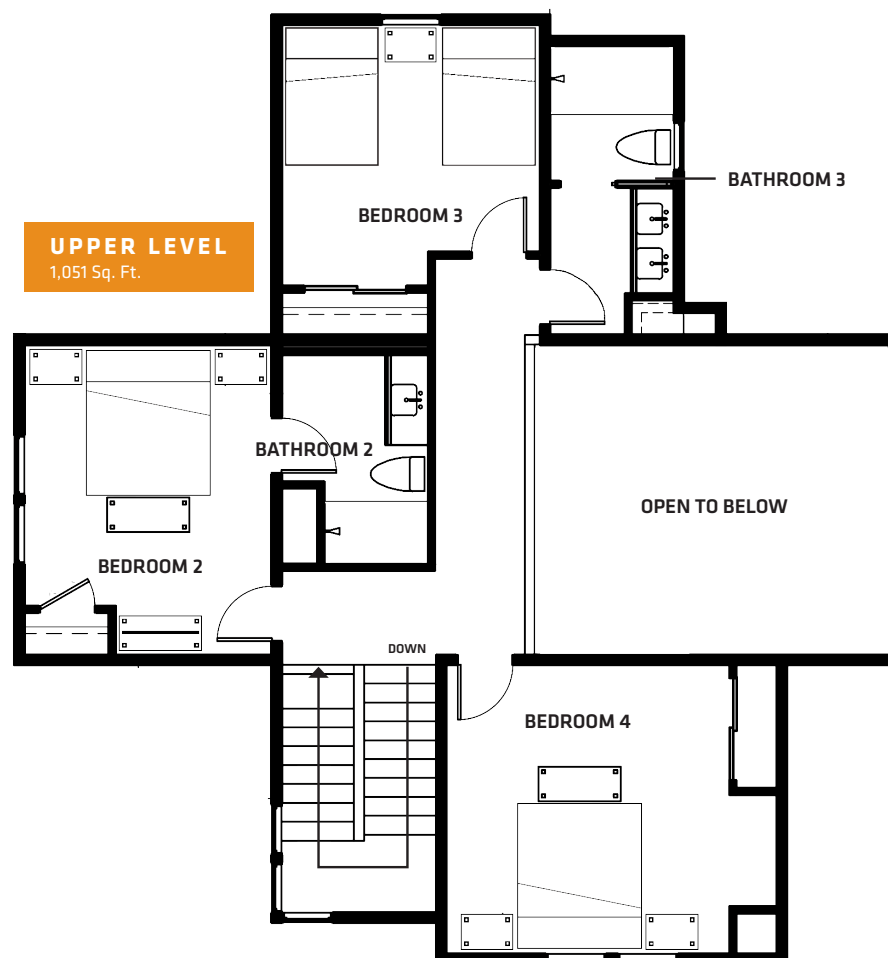




SPANISH PEAKS
MOUNTAIN CLUB

POWDERCREST RESIDENCE FLOOR PLAN
4 BEDROOMS | 3.5 BATHS | 2,914 SQ FT



THE BIG SKY REAL ESTATE CO.

(406) 995-6333 | INFO@BIGSKY.COM | BIGSKYREALESTATE.COM

The floorplans, square footages, illustrations and features and amenities described herein are for illustrative purposes only and are subject to change without notice. Lone Mountain Land Company LLC makes no representations regarding the accuracy of the information portrayed. No governmental agency has judged the merits or value, if any, of this property. This material shall not constitute an offer to sell in any state or other jurisdiction where prior registration is required. Ownership of a Highlands property includes an obligation to pay assessments to the Spanish Peaks Owners Association, Inc. The purchase of a Highlands property does not include membership in Spanish Peaks Mountain Club, or any right to use the private club facilities. © 2020 Lone Mountain Land Company LLC. All rights in and to the content are owned or controlled by Lone Mountain Land Company. Any unauthorized reproduction is expressly prohibited. APRIL 2021.